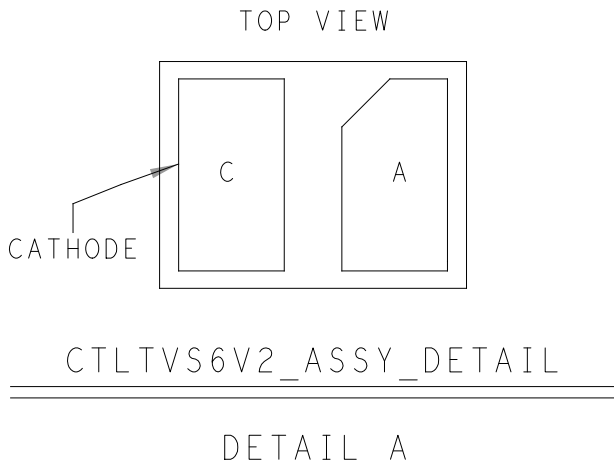


REVISIONS			
REV	DESCRIPTION	DATE	APPROVED
A	INITIAL RELEASE	07FEB24	C.CARBUNARU

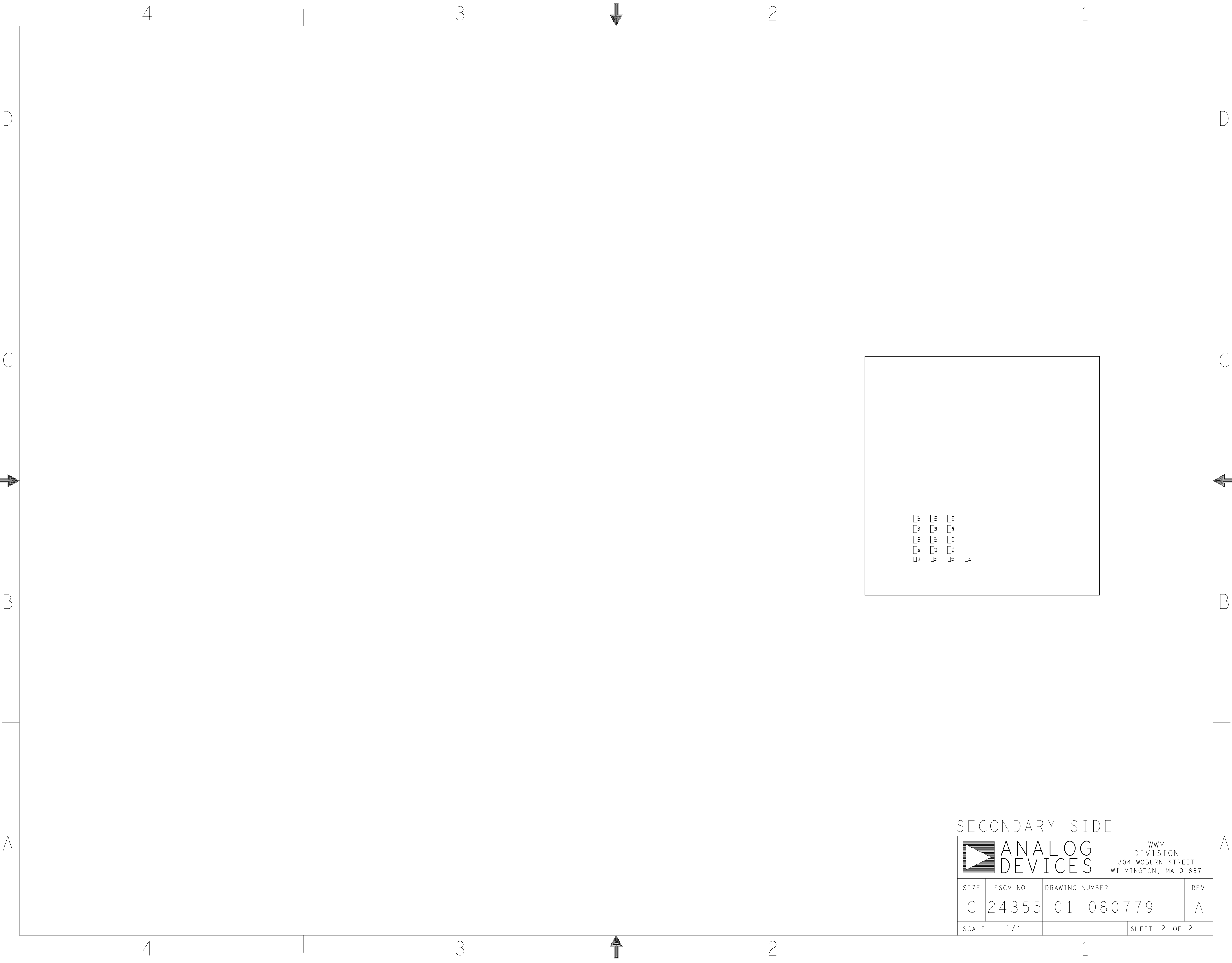
ASSEMBLY NOTES:

- BOARD ACCEPTABILITY PER ANALOG DEVICES, INC. SPECIFICATION TST00119 (LATEST REVISION).
- REPAIRS PER IPC-7711/21(LATEST REVISION) ARE ALLOWED.
- REPAIRS ARE NOT ALLOWED IN SOLDERMASK FREE AREAS ON EITHER SIDE OF THE BOARD.
- RoHS COMPLIANCE: ASSEMBLY VENDOR SHOULD ASSURE COMPLIANCE WITH LEAD-FREE AND RoHS PCB ASSEMBLY STANDARDS (EU RoHS DIRECTIVE 2002/95/EC).
- BOARDS TO BE SHIPPED SINGULATED AFTER ASSEMBLY PROCESS.
- SMOOTHEN EDGES AND FREE FROM BURRS AFTER DEPANELIZATION.



PRIMARY SIDE

UNLESS OTHERWISE SPECIFIED DIMENSIONS ARE IN INCHES			APPROVAL		DATE		<div><div></div><div>ANALOG DEVICES</div></div> <div>WWM DIVISION 804 WOBURN STREET WILMINGTON, MA 01887</div>							
TOLERANCES			TEMPLATE ENGINEER											
DECIMALS	FRACTIONS	ANGLES	HARDWARE SERVICES M.VALE		07FEB24		TITLE ASSEMBLY ADE9430/MAX32650 CUSTOMER EVAL BOARD Z							
.XX --.010	--1/32	-- 2	HARDWARE SYSTEMS											
.XXX --.005														
.XXXX --.0050														
MATERIAL			TEST ENGINEER				SIZE		FSCM NO		DRAWING NUMBER		REV	
			COMPONENT ENGINEER N.CATALAN		07FEB24									
			TEST PROCESS											
			HARDWARE RELEASE K.JABATAN		07FEB24									
FINISH			DESIGNER J.MALAYBA		07FEB24		C		24355		01 - 080779		A	
			PTD ENGINEER C.CARBUNARU		07FEB24									
			CHECKER											
DO NOT SCALE DWG							SCALE		1 / 1				SHEET 1 OF 2	



SECONDARY SIDE

<div><div><div></div></div><div>ANALOG DEVICES</div></div> <div>WWM DIVISION 804 WOBURN STREET WILMINGTON, MA 01887</div>			
SIZE	FSCM NO	DRAWING NUMBER	REV
C	24355	01-080779	A
SCALE	1 / 1	SHEET 2 OF 2	